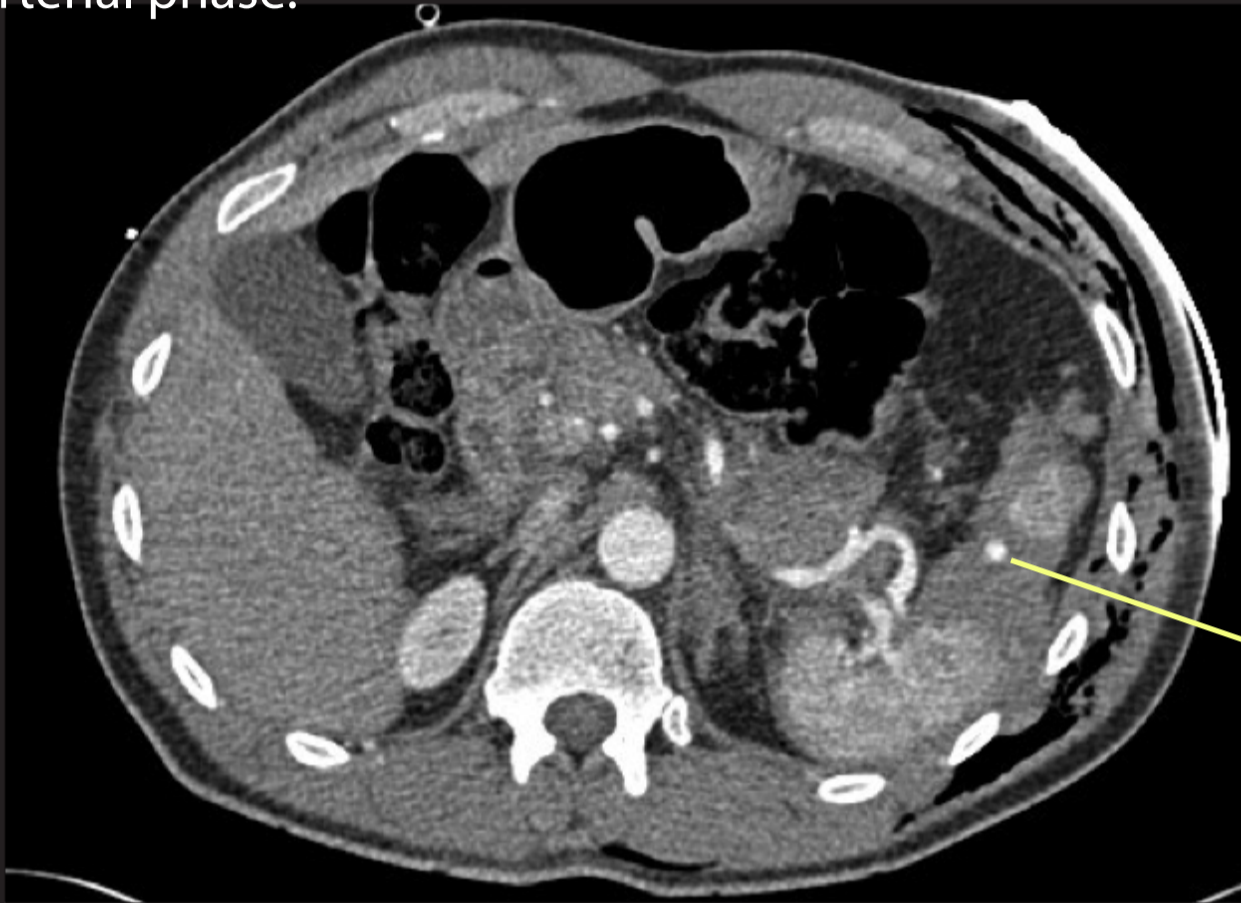


Splenic trauma.

Axial CT scans taken in arterial (upper) and portal (lower) phase demonstrating splenic laceration and traumatic pseudoaneurysm. There is a small amount of peri-splenic fluid, and a large amount of air in the tissues from the concomitant chest injury (pneumothorax).

Arterial phase.



Arterial phase - note the white contrast in the aorta, splenic artery and pseudoaneurysm

Venous phase.



Air in tissues (black)
(subcutaneous emphysema)

Pseudoaneurysm

Poorly enhancing spleen

Normally enhancing spleen